



The Geological Society of London:  
*East Midlands Regional Group*



# Applications of Borehole Geophysical Logging

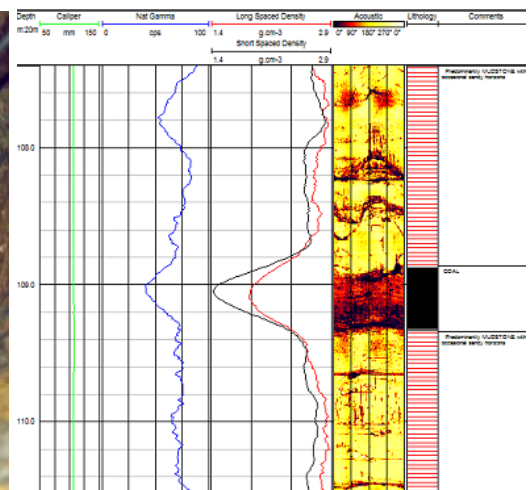
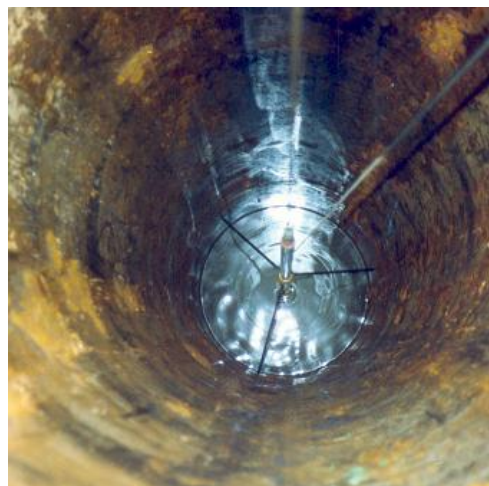
With

**Kim Beesley**

**European Geophysical Services**

A wide variety of geophysical logs are reviewed with case histories and examples from the Geotechnical, Geothermal, Mining and Water industries. Emphasis is given to the optimum application and guidance in selecting logs under the appropriate borehole conditions.

## Tuesday 25th March, 2014



**Refreshments available from 6:30pm in the atrium**  
**Talk starts at 7:00**

University of Derby, Kedleston Road campus, Derby DE22 1GB

-- Everyone welcome--

